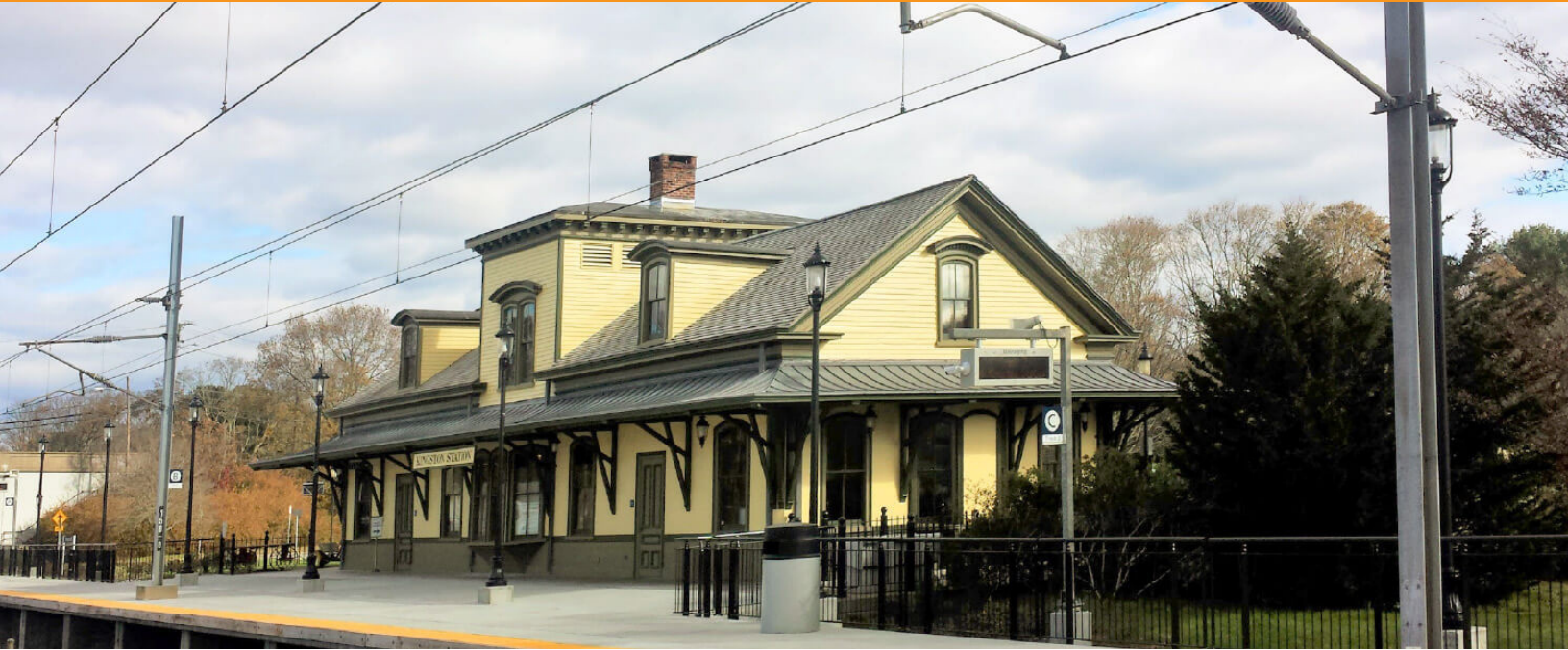




# MANAFORT BROTHERS INCORPORATED

## KINGSTON STATION MODIFICATIONS & CAPACITY IMPROVEMENTS

Rail & Mass Transit



**PROJECT**  
Kingston Station  
Modifications &  
Capacity  
Improvements

**MARKETS**  
Rail & Mass Transit  
Civil & Utility  
Concrete  
Alternative Project  
Delivery

**CONTRACT TYPE**  
Prime Contractor

**PROJECT OWNER**  
AMTRAK

**LOCATION**  
West Kingston, R.I.

The Kingston Station Modifications & Capacity Improvement Project involved the construction of two new 850 foot long high level platforms comprised of pre-cast concrete platform sections supported on drilled micropiles and cast-in-place concrete pile caps. The project also included the construction of 8,250 LF of new rail bed as well as associated Overhead Contact System (OCS) catenary foundations and structures.

Through detailed project planning and phasing, Station operations and Train service were maintained throughout the life of the project. Train speeds through this region are some of the highest train speeds along the Northeast Corridor, approaching 150 mph. Working closely as a team with Amtrak and RIDOT, Manafort successfully coordinated and performed all demolition and construction work within the right of way without incident.

Manafort served as The Prime Contractor for the project and self-performed a majority of the work including demolition, platform excavation, cast-in-place concrete pile cap construction, pre-cast concrete slab fabrication and all pre-cast concrete platform installation.



### CORPORATE OFFICE

414 New Britain Avenue,  
PO Box 99  
Plainville, CT 06062  
Phone: 860.229.4853

### REGIONAL OFFICE

265 Southwest Cutoff  
Worcester, MA 01604  
Phone: 774.512.3800

### REGIONAL OFFICE

24 Martin Street  
Cumberland, RI  
Phone: 401.333.2550

### REGIONAL OFFICE

318 Bear Hill Road, Suite 10  
Waltham, MA 02451  
Phone: 781.328.2365

### REGIONAL OFFICE

204 Mill Street  
Bristol, PA 19007  
Phone: 267.812.5454

[WWW.MANAFORT.COM](http://WWW.MANAFORT.COM)